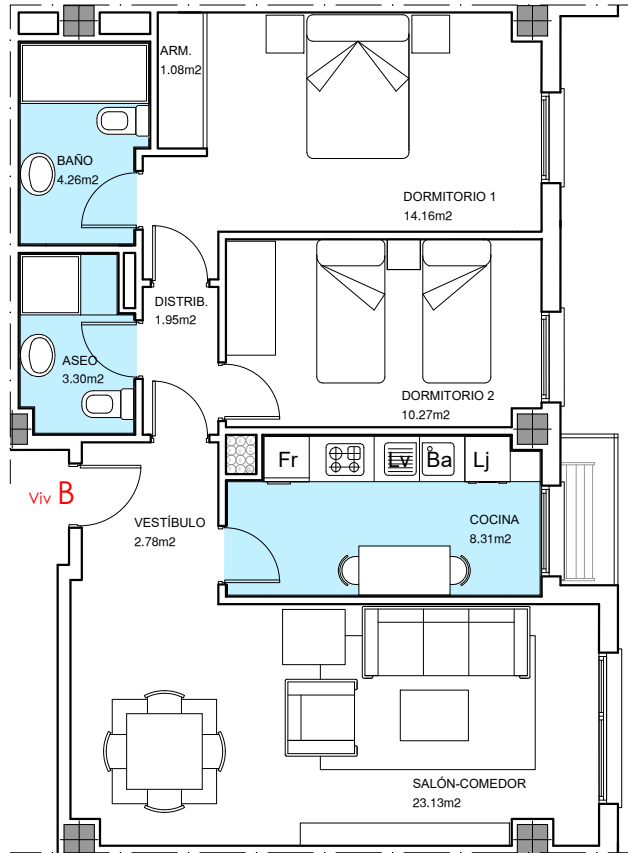


**Portal 3. Planta 5ª. Viv B**

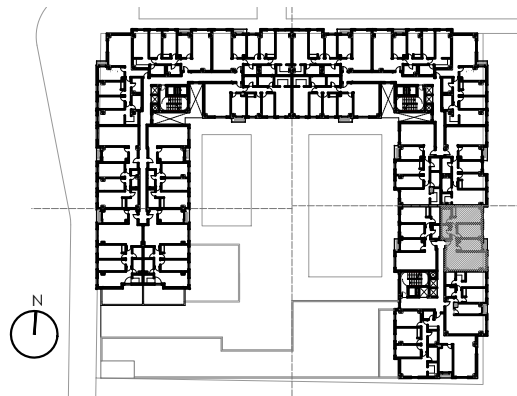


**Portal 3**

**Planta 05**

**Viv. B**

Sup. Útil	69,24
Sup. Construida	80,17



**90 V.P.O., local, garaje y trasteros**

Parcela 11. PRAU "Centro Cívico"

Aranda de Duero. Burgos

Ref. catastral. 2232910VM4123S0000JR-2232909VM4123S0000SR