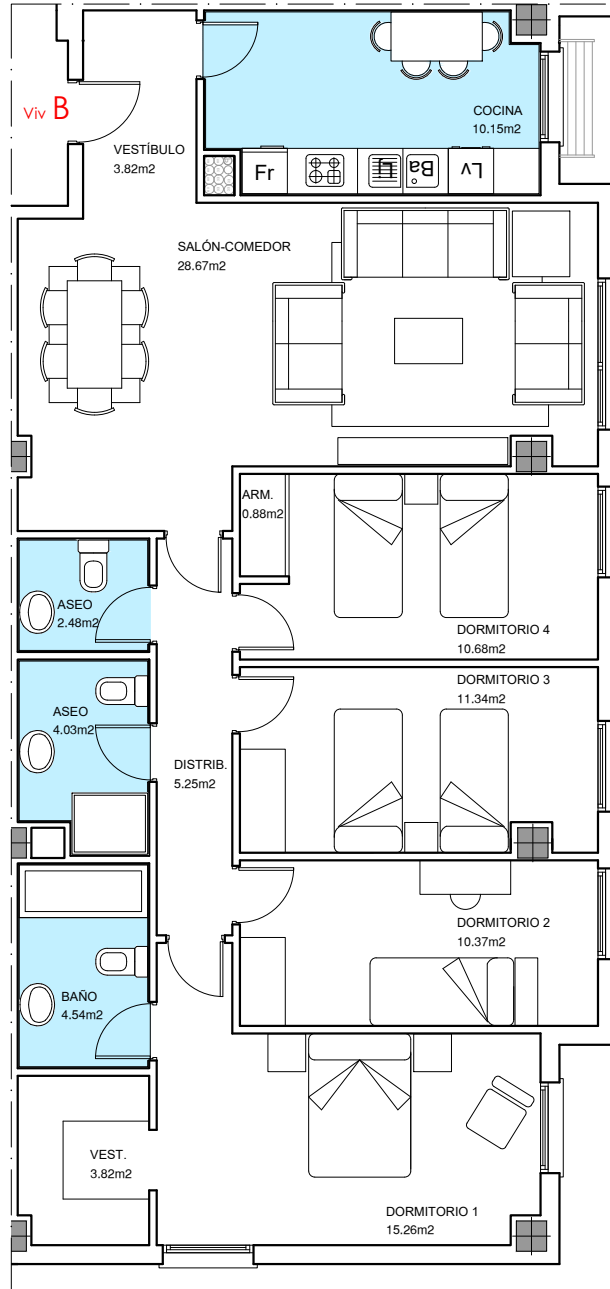


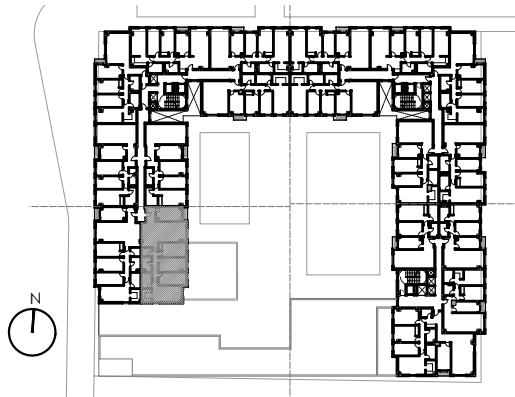
**Portal 1. Planta 4ª. Viv B**



**Portal 1**

**Planta 04 Viv. B**

Sup. Útil 111,29  
Sup. Construida 127,28



**90 V.P.O., local, garaje y trasteros**

Parcela 11. PRAU "Centro Cívico"  
Aranda de Duero. Burgos  
Ref. catastral. 2232910VM4123S0000JR-2232909VM4123S0000SR

