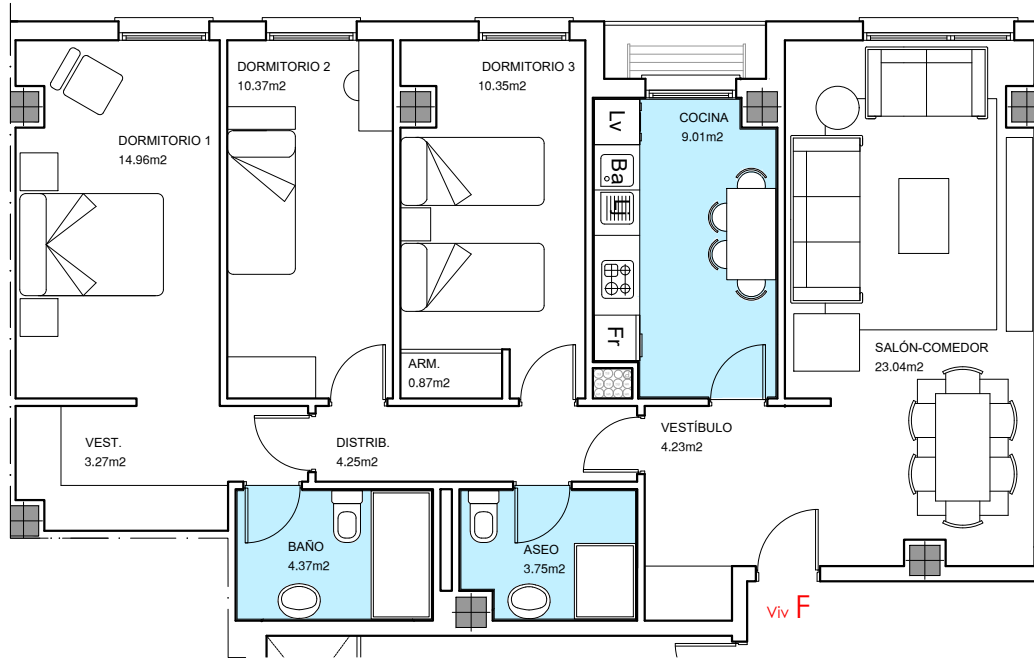


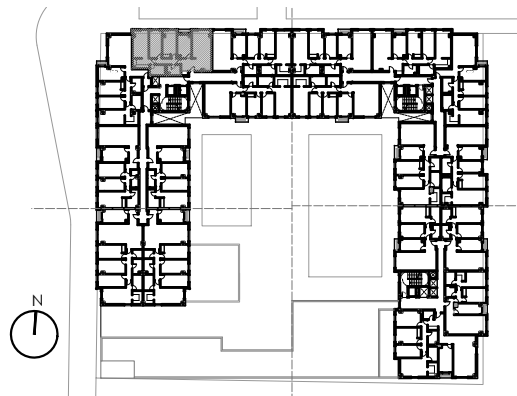
**Portal 1. Planta 3ª. Viv F**



**Portal 1**

**Planta 03 Viv. F**

Sup. Útil	88,47
Sup. Construida	101,29



**90 V.P.O., local, garaje y trasteros**

Parcela 11. PRAU "Centro Cívico"  
 Aranda de Duero. Burgos  
 Ref. catastral. 2232910VM4123S0000JR-2232909VM4123S0000SR

