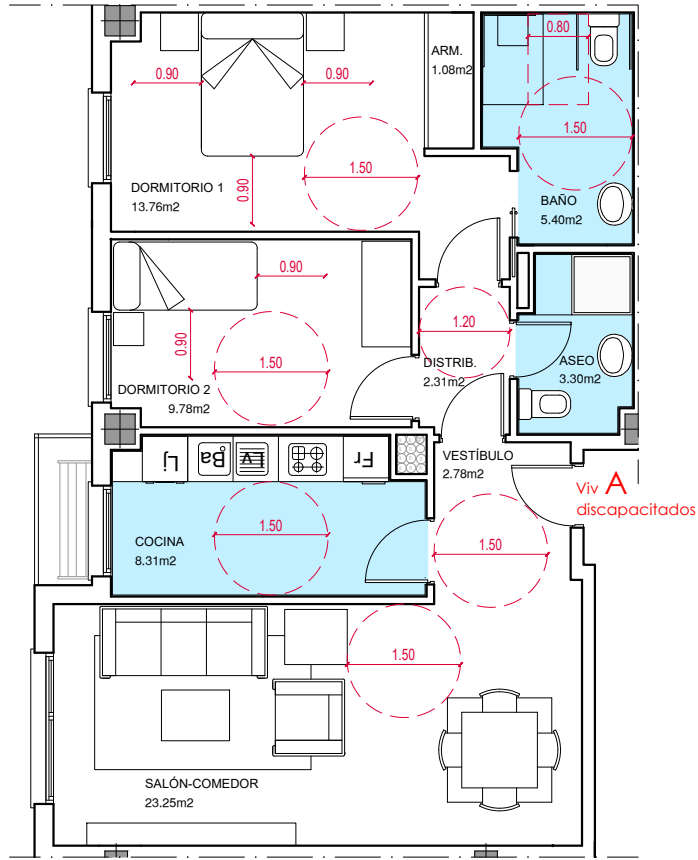


**Portal 3. Planta 2ª. Viv A (discapacitados)**

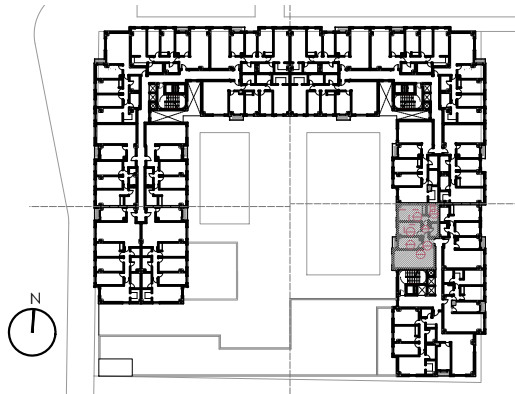


**Portal 3**

**Planta 02**

**Viv. A**

Sup. Útil	69,97
Sup. Construida	80,28



**90 V.P.O., local, garaje y trasteros**

Parcela 11. PRAU "Centro Cívico"  
 Aranda de Duero. Burgos  
 Ref. catastral. 2232910VM4123S0000JR-2232909VM4123S0000SR

